



Tropical version of the Airmass RGB



Jochen Kerkmann

jochen.kerkmann@eumetsat.int

Tropical version of SEVIRI Airmass RGB

(Overshooting Tops RGB)

Standard

Tropical

R WV6.2 – WV7.3

-25 to 0 K

-25 to +5 K (6.2-10.8)

G IR9.7 – IR10.8

-40 to +5 K

-30 to +25 K (Gamma 0.5)

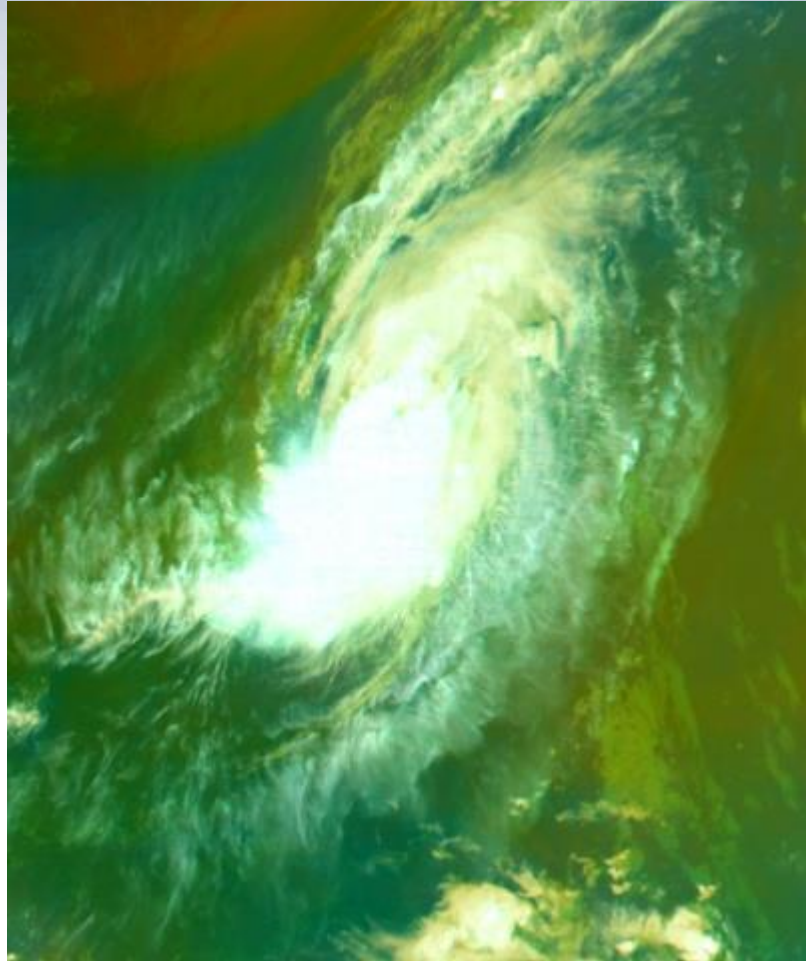
B WV6.2

243 to 208 K

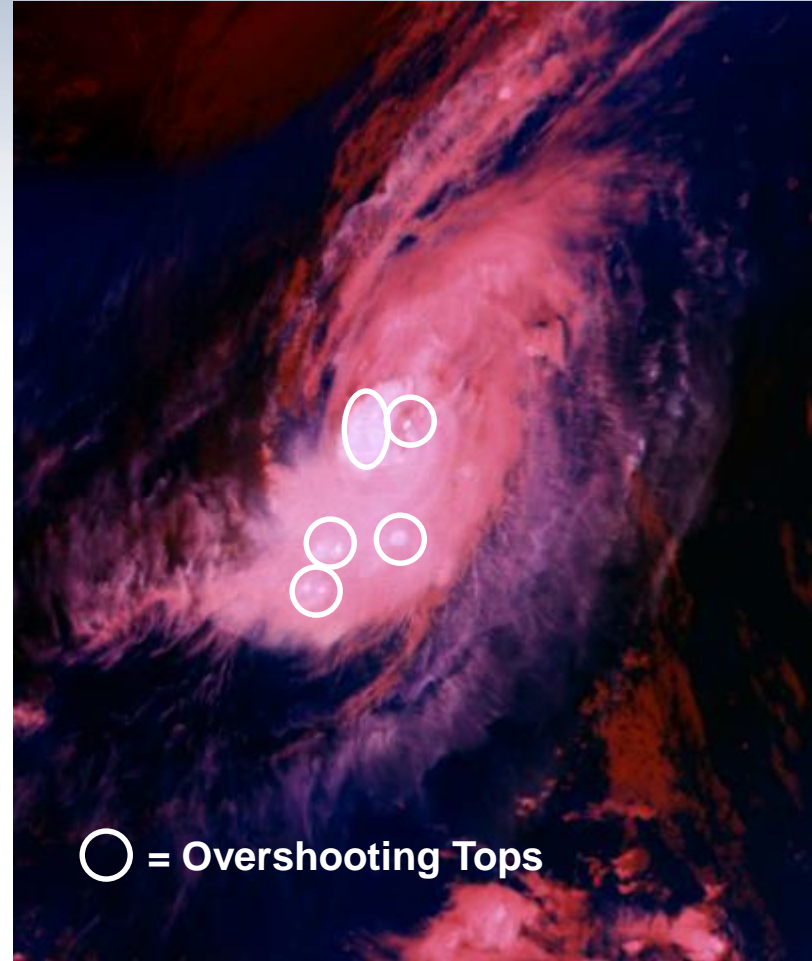
243 to 190 K



Tropical version of Airmass RGB (Overshooting Tops RGB)



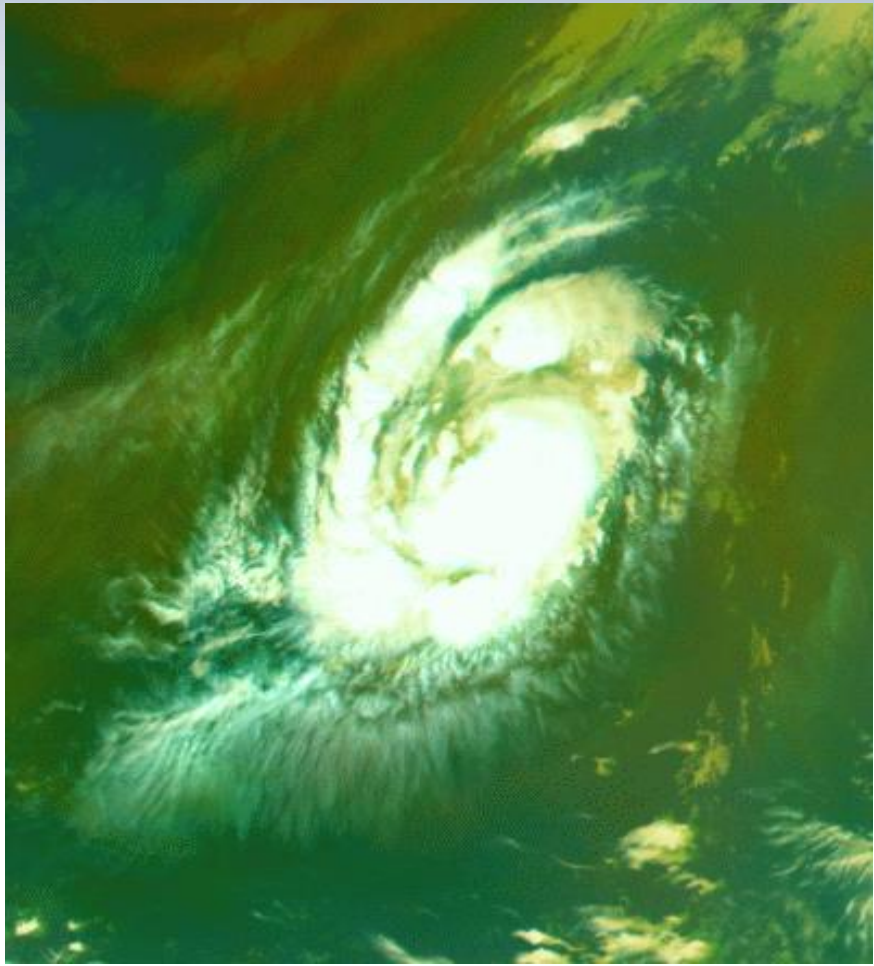
Standard



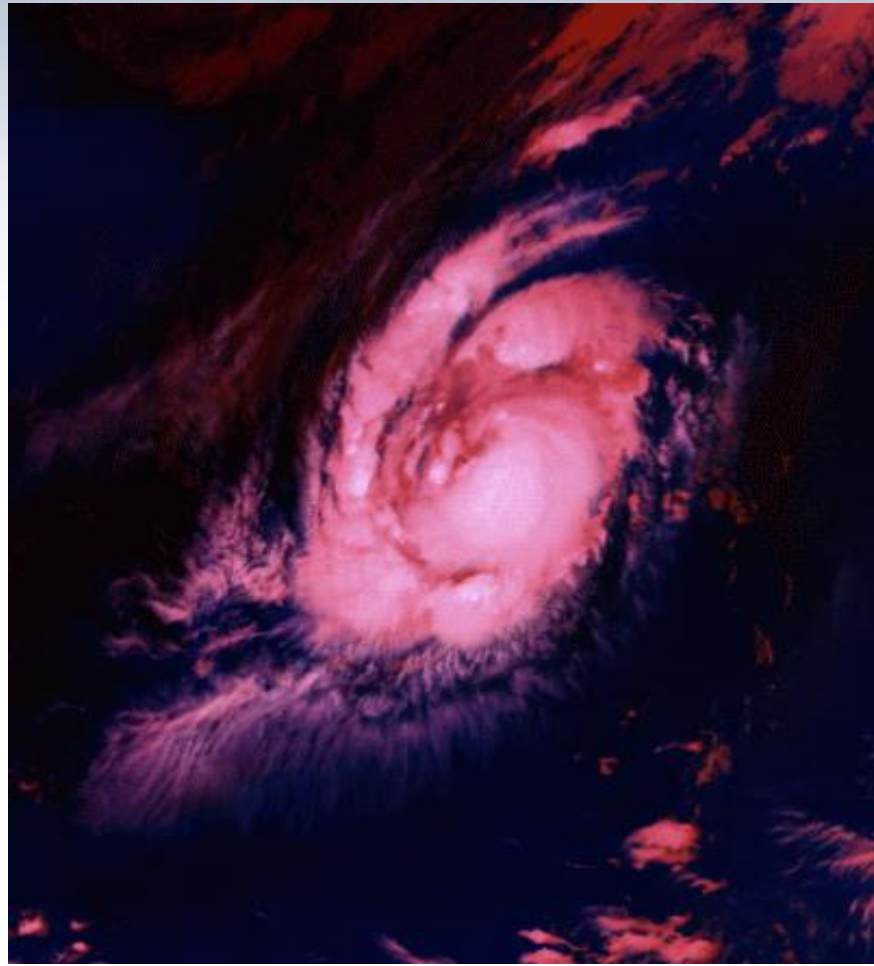
Tropical



Hurricane Julia, 14 Sep 2010, Loop 10:00 – 20:00 UTC

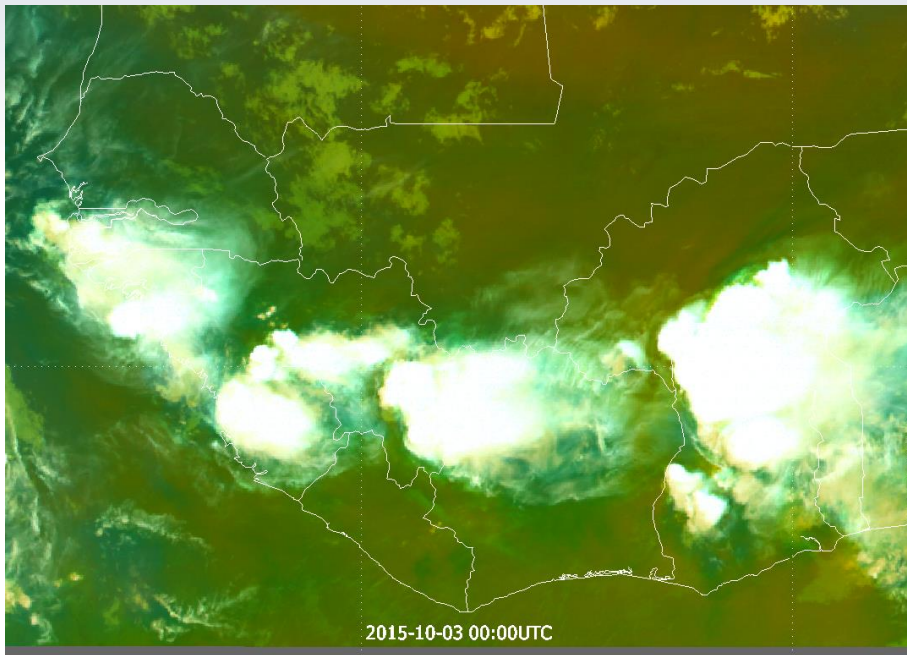


Standard

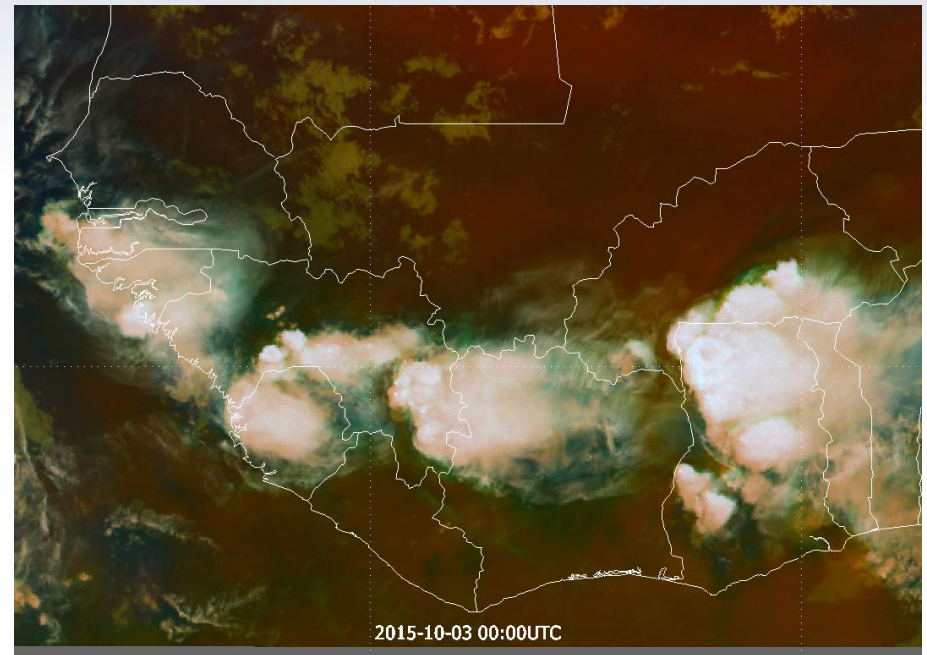


Tropical

Tropical version of Airmass RGB (Overshooting Tops RGB)



Standard

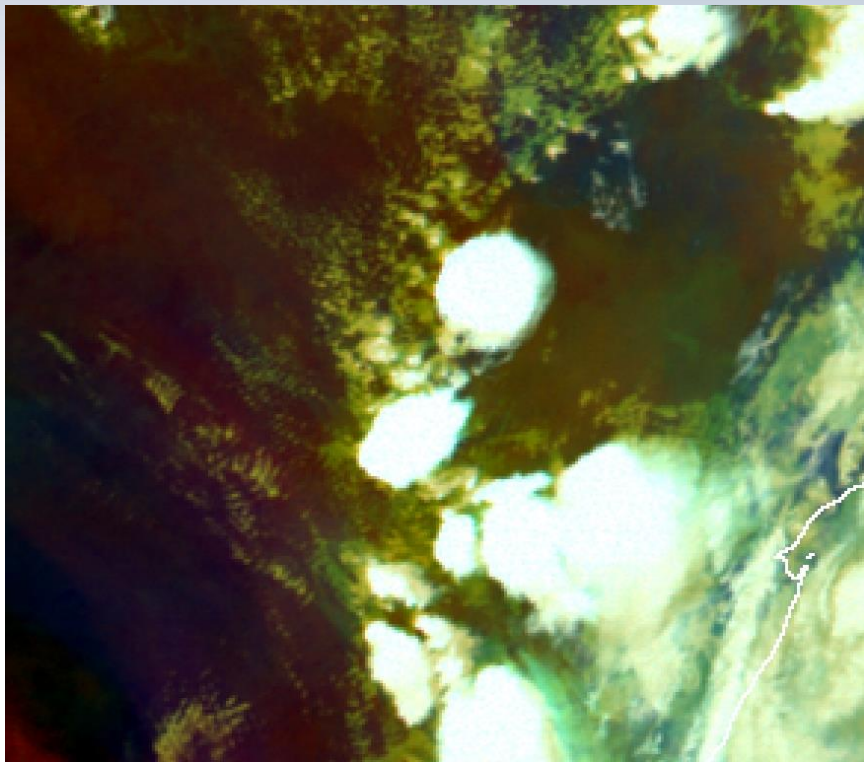


Tropical

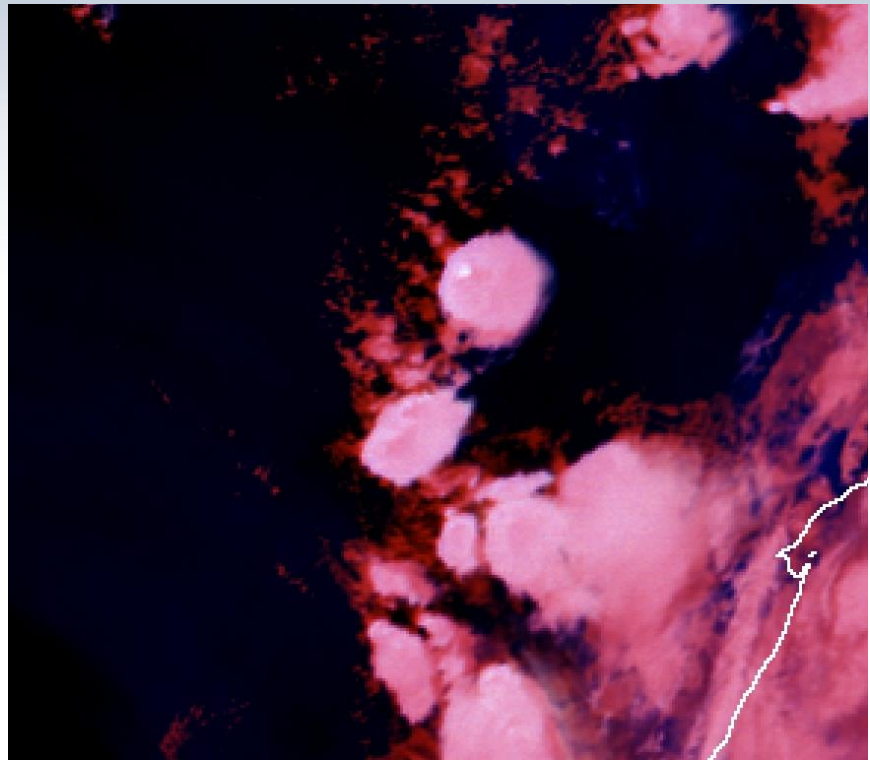
3 October 2015, 00:00 UTC, West Africa



Tropical version of Airmass RGB (Overshooting Tops RGB)



Standard



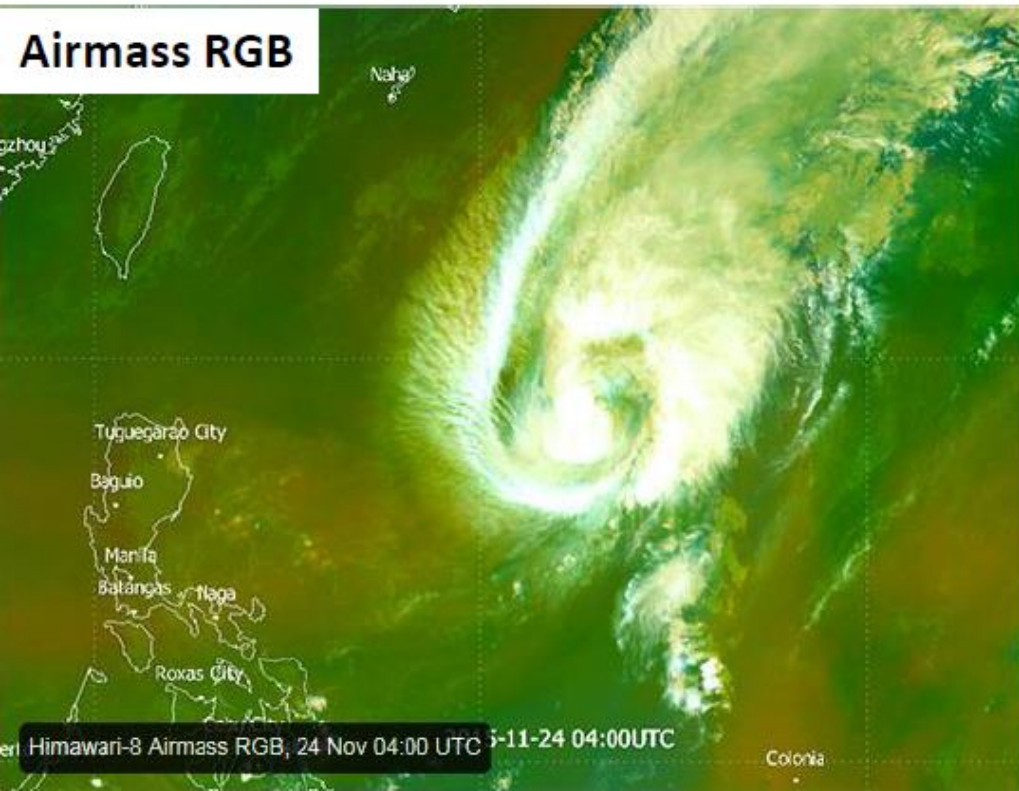
Tropical

South Africa, 6 Nov 2005, 12:00UTC

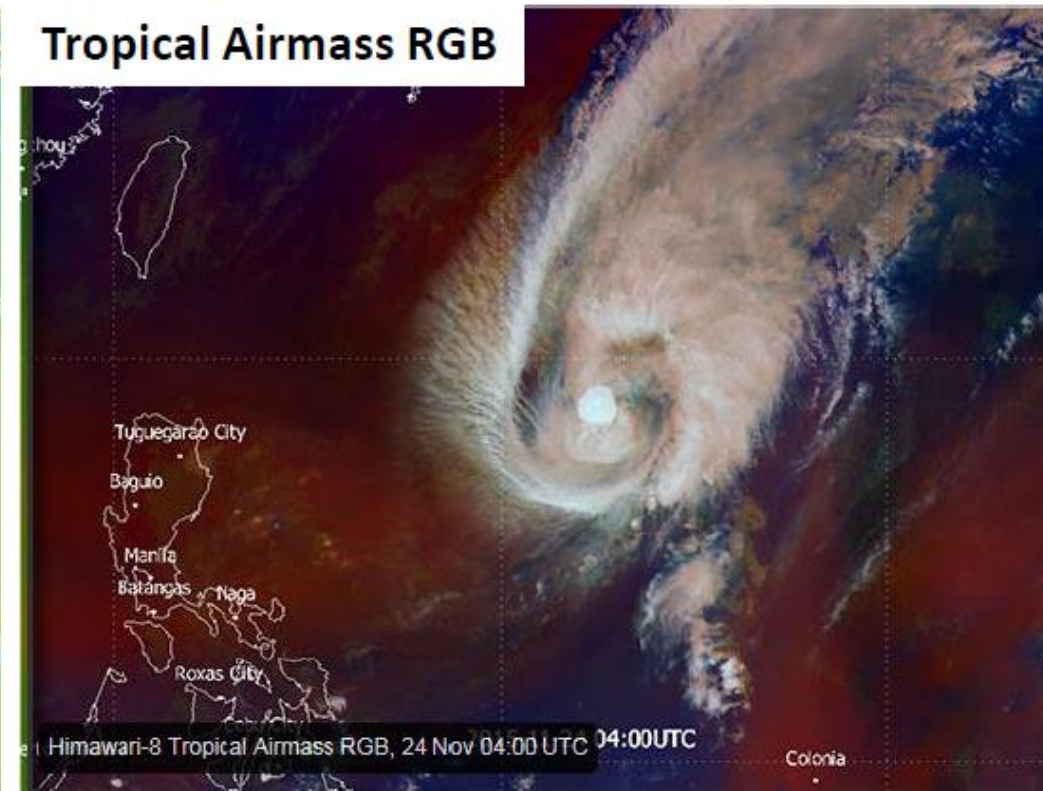
Airmass RGB product – normal vs tropical version

(Typhoon In-fa, 24 November 2015, 04UTC)

image courtesy EUMETSAT

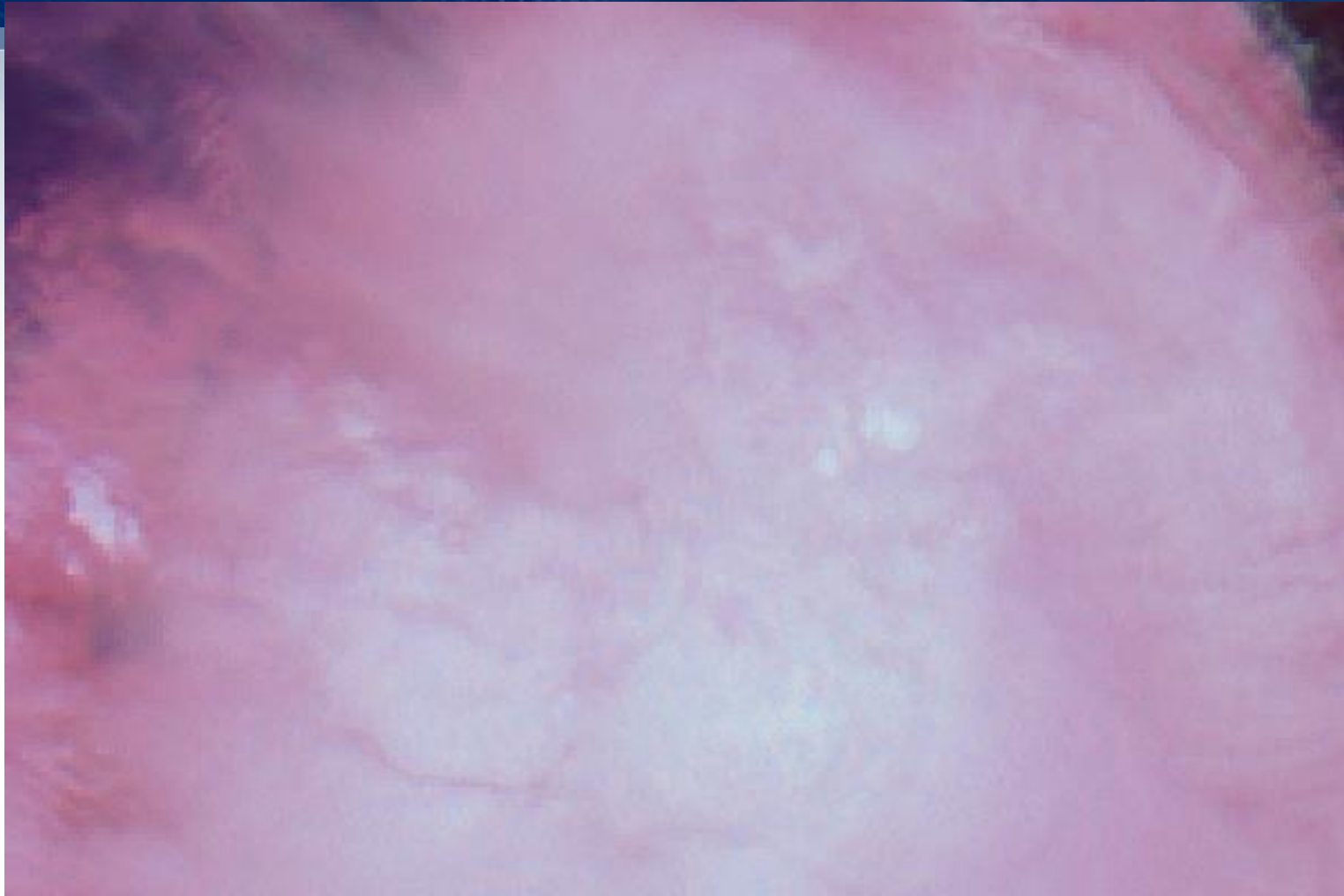


Standard



Tropical

Tropical Airmass RGB (tuned for OTs)



Overshooting Tops in Typhoon Koppu (Pacific)
15 October 2015, HIM-08, AHI, Tropical Airmass RGB
2 km / 2.5 minutes



RGB Overshooting Tops: Interpretation of Colours



High-level ice clouds
(RGB: 233, 147, 194)



Very High-level ice clouds
(overshooting tops)
(RGB: 255, 250, 255)



Mid-level clouds
(RGB: 200, 40, 50)

Ocean/Land

Low Clouds